

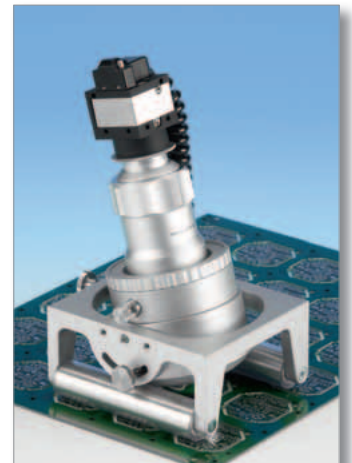
M

Mobile USB microscope Cellcheck CIL N-SLS-USB

This is a mobile testing and measuring system with 12 integrated LED's which can be switched in twelve different configurations. This allows detection of flaws, which remain concealed under uniform illumination. The base with integrated mirror system guarantees perfect illumination. As with all systems the 1600 x 1200 pixel USB 2.0 camera guarantees high quality images. The ST-90 base (figure at top right) and ST-4t base (figures below) can be used for drums, pipes, arched objects or flat material. A flexible USB connection cable provides the camera and illumination with power and transfers the image information to the computer. This set includes 2x, 4x and 6x lenses as well as a transport case and 0.1 mm and 0.01 mm calibration plates. In addition to the standard lenses, lenses with magnification factors of 15x, 20x and 30x are available as well as two further special lenses which allow a field of vision up to 15 mm. Fields of vision, working distances and magnification factors on the monitor are given in the matrix. A magnetic system allows the lenses to be changed quickly and conveniently. The images below show the Cell-check N-SLS with ST-45 stand. With this stand the camera system can be pivoted 45° in each direction as well as rotated around its axis. This allows visualisation of flaws in clear finished or roughness, for example. The walls of drilled holes are also depicted in an angular position. Measurement is accomplished in a 90° position..



A magnetic system allows the lenses to be changed quickly and conveniently. The images below show the Cell-check N-SLS with ST-45 stand. With this stand the camera system can be pivoted 45° in each direction as well as rotated around its axis. This allows visualisation of flaws in clear finished or roughness, for example. The walls of drilled holes are also depicted in an angular position. Measurement is accomplished in a 90° position..



Applications: In the electrical industry: Measuring diameter of drilled holes, line widths, distances. Quality of hole walls, concentricity of hole and solder pad. Printing industry: Offset printing plates, prints of all kinds, rubber printing drums, proofing screen print templates, holograms, security printing Wood and plastics industry: Quality of veneers and laminated surfaces. Metal working industry: Embossing drums, small drill bits and indexable inserts. Glass Printing control on windows for the automotive industry. These are only a few examples.



In combination with the Metric Standard or Metric Plus measuring software, the software can be installed on various laptops or PC's. The measuring software is automatically enabled as soon as the camera system is connected with the USB connection cable. The enable code is integrated into the USB camera making dongles superfluous.

The measuring software is calibrated with glass measuring rods included with the Cellcheck N-SLS.



When the Cellcheck N-SLS is used frequently for checking small or miniature parts, it can be combined with the ST-CIL stand. This stand is equipped with a 25 x 25 cross table (spindles with 0.01 mm increments) and can be upgraded with an optional rotation table. This allows micro-sections to be positioned easily, for example.

Accessories such as V-blocks with depths of 4 mm and 10 mm, which can be inserted into the rotation table, facilitate visual checking and inspection of round parts considerably.

Matrix for Cellcheck CIL N-SLS-USB

The field of view is specified in the horizontal direction. The magnification factor is based on a 24" screen (measured diagonally). All length dimensions are in mm. The USB 2.0 camera has a resolution of 1600 x 1200 Pixels (1/2" Chip). Divide the visible area in microns by 1600 to determine the pixel size.

Tube length	Objective lens	2x	4x	6x	10x	15x	20x	30
110 mm	Working distance mm	35	19	11	6	9	6	4
	Field of view mm	2.6	1.3	0.9	0.5	0.35	0.26	0.18
	Magnification	84	160	242	400	596	800	1143