

Crack magnifier RL-6



Magnification factor	6x
Focusable	Yes
Field of view	30 mm
Measuring length	20 mm
Scale	0.1 mm
Line width	0.02 mm
Optical characteristics	Aplanatic, distortion free
Dimensions	32 x 55 mm
Weight	40 Grams
Plastic box	Included
Standard scale	Included as standard feature

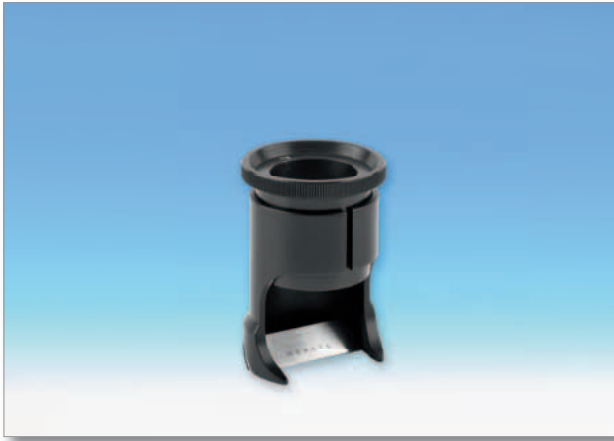


Our classic crack magnifier: Robust all-metal version with distortion-free (aplanatic) lens. The primary component in this crack magnifier is the 45° angular stainless steel graduation plate in the base. It has etched graduations of 0.1 mm. This measuring instrument can be focussed with its height-adjustable lens systems (sliding focus). This crack magnifier is particularly suitable for checking the cutting edges on drill bits and milling cutters for machining metal. Particularly for this type of application, the stainless steel scale is superior to a glass scale, which can scratch easily. The angled layout allows ensures good light incidence while preventing reflection when the light is bright, making the scale very easy to read off. The crack magnifier is available with magnification factors of 6x, 8x and 10x. This crack magnifier is preferred by technicians in the construction field for measuring the width of cracks in concrete. The ocular can be removed from the holder for inspection without contact. Naturally the scales are available separately as replacement parts.

New: As of the middle of September 2010 an optional illumination unit is available as a practical accessory. The retaining ring can simply be pushed over the body of the crack magnifier and arrested with the knurled screw on the side. The bright LED illumination has a battery life of approximately 50 hours (3 button cells).



Crack magnifier RL-8



Magnification factor	8x
Focusable	Yes
Field of view	20 mm
Measuring length	10 mm
Scale	0.1 mm
Line width	0.02 mm
Optical characteristics	Aplanatic, distortion free
Dimensions	32 x 50 mm
Weight	37 Grams
Plastic box	Included
Standard scale	Included as standard feature



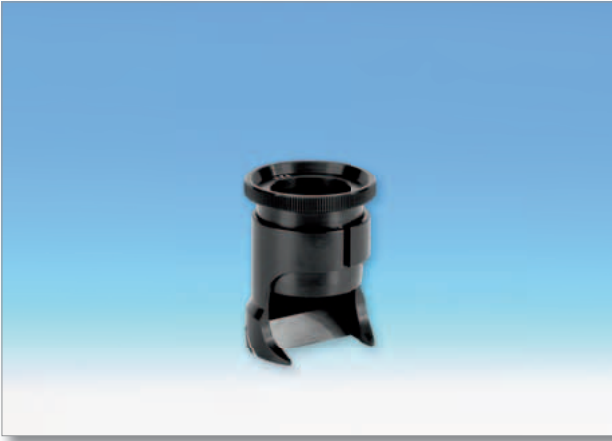
Crack magnifier RL-10



Magnification factor	10x
Focusable	Yes
Field of view	20 mm
Measuring length	10 mm
Scale	0.1 mm
Line width	0.02 mm
Optical characteristics	Aplanatic, distortion free
Dimensions	32 x 45 mm
Weight	36 Grams
Plastic box	Included
Standard scale	Included as standard feature



Crack magnifier RL-12



Magnification factor	12x
Focusable	Yes
Field of view	12 mm
Measuring length	6 mm
Scale	0.05 mm
Line width	0.01 mm
Optical characteristics	Aplanatic, distortion free
Dimensions	32 x 45 mm
Weight	36 Grams
Plastic box	Included
Standard scale	Included as standard feature



Crack magnifier RL-B-6



Magnification factor	6x
Focusable	Yes
Field of view	30 mm
Measuring length	20 mm
Scale	0.1 mm
Optical characteristics	Aplanatic, distortion free
Dimensions	40 x 57 mm
Weight	75 Grams
Plastic box	Included
Standard scale	Included as standard feature



Highest quality measuring magnifiers: The lenses in the 6x and 8x RL-B crack magnifiers consist of two aplanatically arranged plano-convex optical glass lenses. The RL-B-10 also has a special feature: It is produced using one achromatic (two lens glued together) and two single lenses. This makes the 10x crack magnifier apochromatic. An apochromatic lens system combines the high edge definition of a aplanatic lens with the chromatic aberration correction of an achromatic lens, making it particularly suitable for reproducing the "true" colour of an object while guaranteeing a very good, distortion-free image. It also provides a greater working distance and significantly better light conditions. These higher quality lenses are also the reason for the jump in price from the 8x to 10x version. A special feature of both the RL-B-6 and RL-B-8 versions, is that the lenses provide an 8° angular view of the graduation. By comparison the RL-B-10 has a vertical view. On all three magnifiers the inside of the stand base has a matt white finish to ensure uniform light distribution. The stable metal housing construction guarantees a long service life for these measuring magnifiers.

As with the basic RL version, the 0.1 mm graduation (brass reticule plate with matt chrome finish and laser engraving) is positioned at an angle of 30° in the base. This measuring instrument can be focussed with its height-adjustable lens systems (sliding focus). This crack magnifier is particularly suitable for inspection and measurement in the metal processing industry. Particularly for this type of application, the metal scale is superior to a glass scale, which can scratch easily. The angled layout allows ensures good light incidence while preventing reflection when the light is bright, making the scale very easy to read off. The limit for metal graduation is approx. 40 µm. If desired remeasurement is possible. This crack magnifier is preferred by technicians and appraisers in the construction field for measuring the width of cracks in concrete. The ocular can be removed from the holder for inspection without contact. Naturally the scales are available separately as replacement parts.

Crack magnifier RL-B-8



Magnification factor	8x
Focusable	Yes
Field of view	20 mm
Measuring length	10 mm
Scale	0.1 mm
Optical characteristics	Aplanatic, distortion free
Dimensions	40 x 47 mm
Weight	68 Grams
Plastic box	Included
Standard scale	Included as standard feature



Crack magnifier RL-B-10



Magnification factor	10x
Focusable	Yes
Field of view	20 mm
Measuring length	10 mm
Scale	0.1 mm
Optical characteristics	Apochromatic, distortion free
Dimensions	30 x 51 mm
Weight	55 Grams
Plastic box	Included
Standard scale	Included as standard feature

